

## About The Speaker/Facilitator

### Speaker

**Ms Olga** is a Speech Therapist at Tan Tock Seng Hospital. She has experience working with patients with various medical conditions who have communication and/or swallowing problems. In particular, she has experience in the area of neuro rehabilitation. She also has an interest in working with people with Parkinson Disease and currently runs outpatient specialized voice clinics for people with Parkinson Disease.

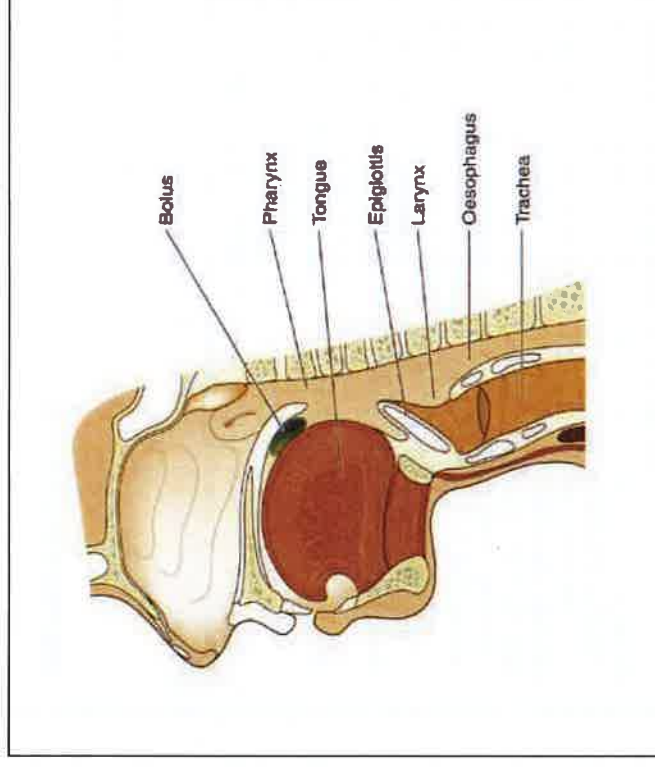
### Facilitator

**Ms Li Wei** is an Advanced Practice Nurse with National Neuroscience Institute at Tan Tock Seng campus. She graduated from National University of Singapore with a master degree in Adult Care Nursing.

She sub-specialises in Parkinson disease and movement disorder and has many years of experience in managing patients with Parkinson disease including deep brain stimulation. She is also a qualified advanced care planning facilitator.

# Managing Swallowing and Speech Dysfunction

Specially tailored for Care Partners by Parkinson Society Singapore



Parkinson Society Singapore

Block 191, Bishan Street 13, #01-415, Singapore 570191 ☎: 6353 5338, 📧: 6353 3085  
[www.parkinson.org.sg](http://www.parkinson.org.sg) ✉️ [info@parkinson.org.sg](mailto:info@parkinson.org.sg)



Parkinson Society Singapore

Block 191, Bishan Street 13, #01-415, Singapore 570191 ☎: 6353 5338, 📧: 6353 3085  
[www.parkinson.org.sg](http://www.parkinson.org.sg) ✉️ [info@parkinson.org.sg](mailto:info@parkinson.org.sg)

# Registration Form

## Date & Time 日期和时间

**21 September 2019 (Saturday) 9.00am to 12 noon**

**九月二十一日 (星期六) 九点至十二点**

## Participant's Details 参加者资料

Name 姓名: \_\_\_\_\_ Gender: F/M

NRIC: \_\_\_\_\_ Age: \_\_\_\_\_ Contact: \_\_\_\_\_  
(last 4 digits)

## Parkinson Patient's Details:

Name: \_\_\_\_\_ Member / Non-Member

Relationship: \_\_\_\_\_

*Whilst reasonable precaution will be taken by PSS and its employees, instructors and staff to ensure the safety of participants. I understand and agree that, at all times, I take part in the Caregiver Workshop organised by PSS at my own risk and safety remains my sole responsibility. Without limiting the generality of the above, I undertake, confirm and agree that:*

1. I shall obey all rules governing my safety and behaviour imposed by PSS, its employees, staff and instructors;
  2. PSS and its employees, staff and instructors will not be held liable by me in any way whatsoever for any loss, personal injury, mishap, accident, death or any loss of or damage to my property whatsoever arising, directly or indirectly, as a result of or in connection with my participation in the Activity, except for such injury or death that is caused directly by PSS or any of its employees', staffs or instructor's gross negligence; and
  3. I shall fully indemnify and at all times keep well and fully indemnified each of PSS and its employees, staff and instructors against any action, proceeding, liability, claim, damages, loss, costs and expenses incurred, suffered or sustained by them arising, directly or indirectly, as a result of or in connection with my participation in the Workshop.
  4. All fees made are non-refundable.
- And I hereby give my consent for the photos taken during the Caregiver Workshop to be used for publicity.**

Signature & Date: \_\_\_\_\_  
(compulsory)

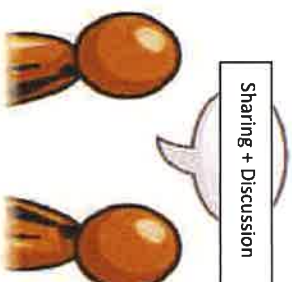
PSS Receipt No.:

# Programme Highlights

## SESSION 1

If you care for someone with Parkinson Disease, you won't want to miss this workshop to help you recognize the symptoms of swallowing problems that commonly occur in Parkinson Disease. Various kinds of feeding techniques would also be taught and explained during the session. And the workshop will end off with a time of Q & A.

如果您是帕金森病患的看护者，您不会想错过这个交流会帮助您认知帕金森病常发生的吞咽问题的症状。交流会也将解释各种喂食技术和回答相关的问题。



## SESSION 2

### Caregiver experience sharing and discussion

This is the platform for caregivers to discuss the difficulties and problems they have encountered while caring for people with Parkinson disease (PwP). Caregivers can also share among themselves the useful and helpful tips for taking care of PwP.

这是看护者讨论他们在照顾帕金森病患者时遇到的困难和问题的平台。看护者也可以互相分享有帮助的贴士。

## Date & Time | 日期和时间

**21 September 2019 (Saturday) 9.00am to 12 noon**  
**九月二十一日 (星期六) 九点至十二点**

## Venue | 地点

The Parkinson Centre  
Block 191, Bishan Street 13, #01-415, Singapore 570191  
帕金森中心  
第191座, 碧山十三街 #01-415, 新加坡邮区 570191

## Programme Fees | 节目收费

\$20 (M) 会员 / \$30 (NM) 非会员

Please mail registration form together with your cheque in favour of Parkinson Society Singapore to the Parkinson Centre.  
You may also make payment at the Parkinson Centre via cash or credit card. For enquiries, please contact us at 6353 5338.